

# CALIBRE

## DESIGN AWARDS 2022

### 2022 Calibre Design Awards - Nominated Projects

#### EDUCATION



#### **California State University Long Beach Parkside North Residence Hall**

Nominated by: Gensler  
California State University, Long Beach  
McCarthy Building Companies, Inc.  
Tangram Interiors



#### **California State University, Los Angeles, Student Services Building**

Nominated by: ZGF  
AtelierTen  
California State University, Los Angeles  
Rudolph and Sletten, Inc.



#### **Milken Community High School**

Nominated by: ODAA design & architecture  
AMA Group  
JDM Contractors  
SAW & Associates  
Seeley Brothers  
Sheridan Group



#### **Roosevelt Elementary School, Anaheim E.S. District**

Nominated by: DLR Group  
Anaheim Elementary School District  
KPFF Structural Engineers  
Lynn Capouya, Inc  
Snipes-Dye Associates  
Webb Food Service Design

## EDUCATION



### **Santa Monica High School Discovery Building**

Nominated by: HED

Haworth

McCarthy Building Companies, Inc.

Moore Ruble Yudell Architects & Planners

Pacific Office Interiors

Santa Monica-Malibu Unified School District



### **SOKA University of America Marie & Pierre Curie Hall**

Nominated by: HOK

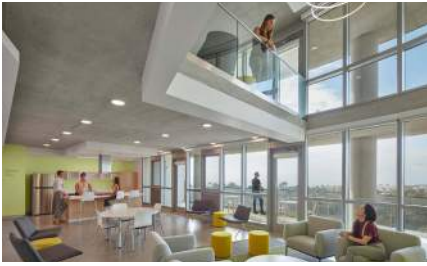
Colin Gordon

McCarthy Building Companies, Inc

Michael Baker International

Nabih Yousef

Soka University of America



### **UC San Diego North Torrey Pines Living and Learning Neighborhood**

Nominated by: HKS

BKM

Clark Construction

SRA

UCSD



### **Vistamar High School**

Nominated by: ODAA design & architecture

Chef's Toys

Corporate Contractors, Inc.

CSI Fullmer

Interactive Restaurant Consulting Inc.

Lam & Kaainoni Engineering Corp.

# HEALTHCARE



## **Leisure World Seal Beach Medical Clinic**

Nominated by: Little Diversified Architectural Consulting, Inc.  
All American Permits  
Confidential Fortune 10 Client  
Infrastructure Factor Consulting, Inc.  
Therapy Physics, Inc.  
Wong & Associates Consulting Engineers



## **Mark Ridley-Thomas Behavioral Health Center**

Nominated by: HOK  
Bernards Brothers, Inc.  
JAMA  
Los Angeles County Public Works  
P2S



## **Ruhs Community Health Center**

Nominated by: Westgroup Designs  
CG Construction  
GM Business Interiors  
Riverside County  
The Boureston Companies



## **VA Outpatient Clinic**

Nominated by: Ware Malcomb  
KPFF  
Lusardi  
P2S  
Protea  
Veteran's Affairs



# HOSPITALITY



## **Agnes Restaurant & Cheesery**

Nominated by: ORA  
Courtney Construction  
Oculus Light Studio  
Stephen Billings Landscape Architecture  
Thovan Hospitality



## **Callie**

Nominated by: Studio UNLTD  
Baus Architecture  
Ellis Contracting  
Orness Design Group, Inc.



## **Matu**

Nominated by: Marmol Radziner  
Engineer Solutions  
James B. Parker Construction  
Kelly Architects



## **Sky Deck**

Nominated by: RDC  
Donahue Schriber Real Estate Group  
KGM Lighting Design  
RSM Design  
Texture  
Tildin Engineering



## **Sunny Optometry**

Nominated by: Revel Architecture & Design  
Alta Construction  
Sunny Optometry  
Vision Consulting Services



## **Tower Theatre Adaptive Re-use**

Nominated by: Foster + Partners and Gruen Associates  
Confidential Team Member  
Historic Resources Group  
Shawmut Design and Construction

## MULTI-FAMILY HOUSING



### **Celeste**

Nominated by: Minarc

DCA  
DK Engineering  
GMEP



### **Persea**

Nominated by: H. Hendy Associates

Architects Orange  
Corporate Business Interiors  
LLJ Ventures  
Orion Pacific  
Wheelihan Construction

## PUBLIC & COMMUNITY SPACES



### **LA County Hall of Records, 7th Floor Records Space**

Nominated by: SmithGroup

Catalyst

Los Angeles County Public Works

P2S

Vantage Tech



### **Museum of Tolerance, Los Angeles, Claudia and Nelson Peltz Social Lab**

Nominated by: Yazdani Studio of CannonDesign

HLB Lighting Design

Sierra Pacific Constructors

Simon Wiesenthal Center, Inc.



### **Pasarroyo**

Nominated by: Wolcott Architecture

EPTDESIGN

Lighting Design Alliance

Syska Hennessy Group



### **SoFi Stadium**

Nominated by: HKS

Henderson Engineers, Inc.

Hollywood Park

KGM

Turner Construction

Walter P. Moore

## WORK EXTRA LARGE



### Confidential Client

Nominated by: Gensler  
ARC Engineering  
Banks Landl Lighting  
Clune Construction  
Cresa  
Systems Source



### Inari Medical Relocation

Nominated by: SAA interiors + architecture  
Brandow & Johnston  
CBI  
Inari Medical  
KPRS  
tK1SC



### Kinecta Federal Credit Union Operations Center

Nominated by: Worksmart Design  
Brandow & Johnston  
KPFF  
OFS  
SCI Lighting Solutions  
Shaw Contract



### NFL Los Angeles

Nominated by: Gensler  
AMA Group  
Howard Building Corporation  
KGM Architectural Lighting  
MGAC  
The Sheridan Group



### Rocket Lab

Nominated by: H. Hendy Associates  
Cushman & Wakefield  
KPRS



### Spotify At Mateo Campus, Los Angeles

Nominated by: RIOS  
ARC Engineering  
Holmes  
Spotify  
Taslimi Construction  
WSDG



## WORK LARGE



### 101 Continental

Nominated by: Wolcott Architecture  
AMA Group  
Howard Building Corporation  
RLA  
Simpson Gumpertz & Heger



### 331 North Maple

Nominated by: HLW  
AMA Group  
DivcoWest  
Howard Building Corporation  
IDG  
Spark Studio



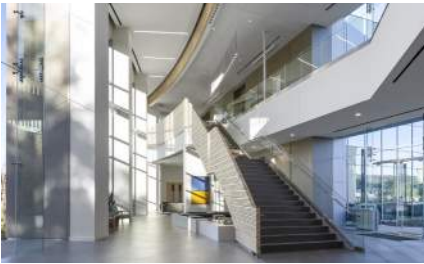
### Confidential Technology Company

Nominated by: ShubinDonaldson  
Newson Brown Acoustics LLC  
Oculus Light Studio  
One Story Architect  
Sierra Pacific Constructors  
Syska Hennessy Group



### Core Digital Media

Nominated by: JK & Co  
Corporate Contractors, Inc.  
Cresa Los Angeles  
Lam and Kaainoni Engineering  
SCI Lighting Solutions  
Tangram Interiors



### Ionis Conference Center

Nominated by: DGA  
Cultura  
DPR Construction  
Project Management Advisors  
The Shalleck Collaborative  
tk1sc



### JLL, Irvine

Nominated by: H. Hendy Associates  
Hines  
KPFF  
Systems Source  
tk1sc  
Turelk



## WORK LARGE



### **Kajabi**

Nominated by: LPA  
BKM Furniture  
Howard Building Corporation  
tk1sc



### **Manatt**

Nominated by: Wolcott Architecture  
Clune Construction  
OPX  
Western Office



### **Tennis Channel Headquarters**

Nominated by: Gensler  
American Office with Pivot Interiors  
ARC Engineering  
Clune Construction  
JLL  
Weidenbach Brown

## WORK MEDIUM



### **Aurora Capital Partners**

Nominated by: HOK  
Cherry & Mandel  
Warner Constructors, Inc.  
Western Office



### **Bolton Insurance**

Nominated by: Moshiri Associates  
LFA  
Systems Source  
Warner Constructors, Inc.



### **CMM 5820**

Nominated by: ENV  
Architype  
Light Build Design  
Plantscape, Inc.  
Sierra Pacific Constructors  
Synergy Partners 360



### **Cushman & Wakefield**

Nominated by: Gensler  
Burger Construction  
Henricksen  
McParlane & Associates, Inc.  
Michael Wall Engineering  
Populate Creative



### **Financial Partners Credit Union Office**

Nominated by: ONE NINE Architecture  
FPCU  
Pivot Interiors  
RAM Construction  
Tangram Interiors



### **Green Hasson & Janks (GHJ)**

Nominated by: HLW  
Green Hasson Janks  
Howard Building Corporation  
M Partners Group  
Spark Studio Lighting Design LLC  
Western Office

## WORK MEDIUM



### Health IT Training and Administrative Office Space

Nominated by: HKS  
AMA Group  
DPB Electrical Engineers  
Joanna Burke Art Consultants  
SKA  
Tangram Interiors



### Los Angeles Workplace Relocation

Nominated by: HED  
Bentley Mills  
California Lighting Sales  
Corporate Contractors, Inc.  
Cushman & Wakefield  
Tangram



### Orgain

Nominated by: H. Hendy Associates  
Esplanade Builders  
Maneuverworks  
Orgain  
SPMD Design  
Tangram



### Roc Nation

Nominated by: GP Architecture  
AMA Group  
Freeman Group, Inc.  
JDAV Design  
Perron-Roettinger  
Sierra Pacific Constructors



### SOLV Energy Headquarters

Nominated by: ID Studios, Inc.  
The Engine is Red  
GMBI  
Good Earth Plants  
Innovative Commercial Envrionments  
Swinerton



### UMG Studio

Nominated by: JK & Co  
ARC Engineering  
California Lighting Sales  
Corporate Contractors, Inc.  
Michael Cronin Acoustic Construction  
Universal Music Group



## WORK SMALL



### **CID Offices Torrance**

Nominated by: Withee Malcolm - A BSB Design Studio  
Collision and Injury Dynamics, Inc.  
Pivot Interiors  
Tangram - Muraflex  
Turelk, Inc.



### **Hanmi Bank**

Nominated by: Klawiter and Associates  
AlfaTech  
House of Joshua  
Mata Construction  
Newmark  
Patcraft



### **Peak at Halo**

Nominated by: HOK  
ARUP  
Brookfield Properties  
Coastline Development, Inc.  
Tillotson Design Associates  
Westfall



### **Roger TV**

Nominated by: CHA Collective  
MASH Studios  
Roger TV  
Shaw Contract



### **Spigen**

Nominated by: D\_SPACE INTERIORS  
FS + Design  
Spigen  
Turelk, Inc.



### **TikTok Headquarters Production Studio**

Nominated by: Gensler  
AMA Group  
Swinerton  
Turner & Townsend



## WORK SMALL



### **Union Bank Plaza**

Nominated by: HLW  
Chattel, Inc.  
KBS  
Nabih Youssef Associates  
Spark Studio  
Swinerton



### **Woodcraft Rangers**

Nominated by: Klawiter and Associates, Inc.  
BH Properties  
HITT Contracting  
Newmark  
OFG